

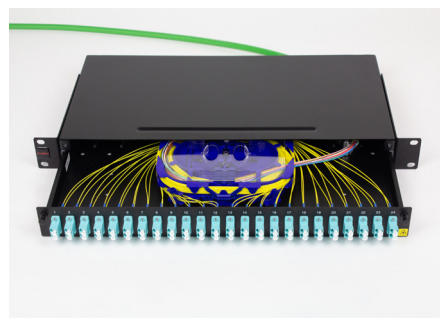
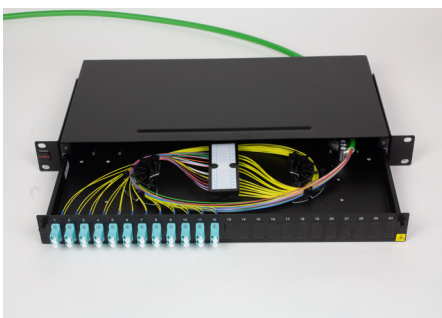
Utility Fiber Enclosure 1U 24 Port Duplex LC (48 Fiber) Unloaded >

Molex 48 fiber duplex LC enclosure is a cost-effective and convenient sliding drawer unit for the connection, protection and management of up to 48 fibers in 1U.

Designed for simple low-density fibre installations on a budget, the Utility Fiber Enclosure includes only the essential features for the connection, protection and management of up to 48 fibres in 1U.

The product is manufactured from cold rolled steel with an integral sliding drawer accepting up to 24 duplex LC adapters and generous space provided for splice holder and cable managers. Traditional fiber cable or preterminated fiber harnesses can be managed in the drawer. The drawer is fitted with nylon slides allowing quick and easy access for installation and MACs. The connections are protected by a steel cover.

The Utility Fiber Enclosure is supplied with adjustable mounting brackets, a Kevlar retention clamp, an M20 cable gland, a self-adhesive fiber cable management hub, a 24 fiber self-adhesive splice holder and a cabinet/rack screw fixing kit.



www.molex.com/products/fiber/enclosures/

Utility Fiber Enclosure 1U 24 Port Duplex LC (48 Fiber) Unloaded >

FEATURES AND ADVANTAGES

Straightforward, cost effective 1U DLC enclosure for low density installations

Robust steel construction, finished in black

Optional port density, up to 24 DLC adapters (48F). Fiber adapters are supplied separately

Sliding drawer unit for ease of installation and access

Adjustable mounting brackets allow flush or recessed mounting

Rear access apertures provide four convenient cable or pre-terminated harness assembly, entry options

Permanently marked port numbering for patch identification

The self-adhesive cable management hub (provided) can be split into segments, allowing each segment to be positioned as required for convenient pigtail cable routing

A self-adhesive splice holder, a M20 gland (9-13.2mm cable o.d.), blank grommet, kevlar clamp and fixing kit are included

SPECIFICATIONS

Environmental Standards

RoHS compliant

REACH compliant

Mechanical

Enclosure Material: CRS (cold rolled steel)

Thickness: 1.52mm/0.6"

Finish: Powder Coat Black

Physical

Dimensions:

482mm/18" (W) x 201mm/8" (D) x

43.6mm/1.75" (H)

Shipping weight: 2.9kg

ORDERING INFORMATION

Order No.	SAP No.	Description
RFR-00326	180660097	UTILITY FIBER ENCLOSURE 1U DLC 48F UNLOADED

www.molex.com/products/fiber/enclosures/

Utility Fiber Enclosure 1U 24 Port Duplex LC (48 Fiber) Unloaded >

COMPATIBLE PRODUCTS & ACCESSORIES



Order No.	SAP No.	Description
18282-0045	182820045	ADAPTER DLC SM OS2 ZR SL FLNG BLU
18282-0047	182820047	ADAPTER DLC SM OS2 ZR SL FLNG GRN APC
18282-0112	182820112	ADAPTER DLC MM OM2 ZR SL FLNG BGE
18282-0113	182820113	ADAPTER DLC MM OM3 ZR SL FLNG AQ
18282-0092	182820092	ADAPTER DLC MM OM4 ZR SL FLNG EV
18282-0224	182820224	ADAPTER DLC MM OM5 ZR SL FLNG LIMEGRN
18282-0182	182820182	ADAPTER DLC SM OS2 ZR SL FLNG SHUTTERED BLU
18282-0183	182820183	ADAPTER DLC SM ZR SL FLNG SHUTTERED GRN APC
18282-0184	182820184	ADAPTER DLC MM OM2 ZR SL FLNG SHUTTERED BGE
18282-0185	182820185	ADAPTER DLC MM OM3 ZR SL FLNG SHUTTERED AQ
18282-0186	182820186	ADAPTER DLC MM OM4 ZR SL FLNG SHUTTERED EV
18282-0217	182820217	ADAPTER DLC MM OM5 ZR SL FLNG SHUTTERED LIME GRN
KFR-00016	180600072	BLANKS BAG OF 20

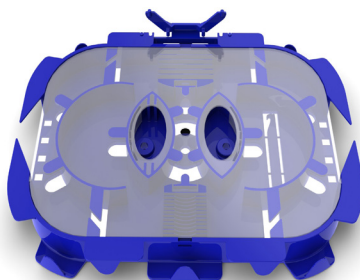
www.molex.com/products/fiber/enclosures/

Utility Fiber Enclosure 1U 24 Port Duplex LC (48 Fiber) Unloaded >

COMPATIBLE ACCESSORIES



Self Adhesive Cable Management Hub, KFR-00053



Universal Splice Tray AFR-00470



Fusion Splice Holder KFR-00052

Order No.	SAP No.	Description
AFR-00470	180600217	Universal Splice Tray, 24 Fiber with built in Cable Management for 1U Multi-function Fiber Enclosure (Self Adhesive, 2 pcs)
KFR-00052	182680048	24F Fusion Splice Holder
KFR-00053	182680049	Self Adhesive Cable Management Hub (2 pcs/pag) Black
KFR-00008	180600025	45mm Fusion Splice Protector - 2.4mm (o.d.)
KFR-00009	180600026	61mm Fusion Splice Protector - 2.4mm (o.d.)
KFR-00040	182680005	45mm Fusion Splice Protector - 2.2mm (o.d.)

www.molexces.com/products/fiber/enclosures/