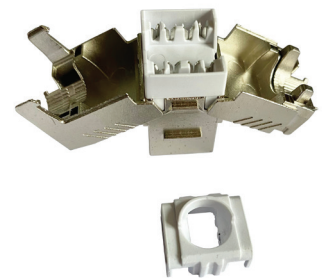


PowerCat 6A Tool-less Shielded Keystone Jack >

Molex PowerCat 6A Tool-less Shielded Keystone Jack is designed for support of installations requiring Keystone Jack apertures specifically in work area applications. The jack is also compatible with Molex range of Keystone Jack Patch Panels.

The PowerCat 6A Shielded Keystone jack offers superior alien crosstalk suppression, excellent insertion loss, and provides enhanced electromagnetic interference (EMI) protection by utilizing robust die cast zinc alloy jack body housing. The shielded jack is dual colour coded for either 568A or 568B wiring schedules. The toolless design allows for on-site installation without the need for a termination tool. The PowerCat 6A Shielded Keystone Jack was specifically designed for highspeed 10GB data transmission. The jack is also backwards compatible with Shielded C6 and C5e systems. Our PowerCat 6A shielded system is suitable for the most demanding PoE applications.



FEATURES & ADVANTAGES

360° shielding for EMI protection

Tool-less termination process

Dual color coding allows 568A/B wiring

Accommodates 23-26AWG conductors

Straight cable entry (180°)

Robust die-cast housing

www.molex.com/products/copper/cat6a

PowerCat 6A Tool-less Shielded Keystone Jack >

SPECIFICATIONS

MECHANICAL

Jack

Grounding contacts: Stainless steel

Housing:

Zinc Die-Casting with nickel plating

Contact bracket: Polycarbonate, UL94V-2

Contact material:

Phosphor bronze with nickel plating

Contact gold plating:

50 micro-inch gold plating on surface of plug contact area

Wire management cap (IDC-Cap):

Polycarbonate, UL94V-2

Operating Life: ≥ 750 cycles

Mating/Un-mating force: ≤ 30 N

Retention strength:

7.7 kg between jack and plug

Installation temperature: 0°C to 50°C
(32°F to 122°F)

Storage temperature:

-40°C to 70°C (-40°F to 158°F)

Operating temperature:

-10°C to 60°C (14°F to 140°F)

IDC

Housing: Polycarbonate, UL94V-2

Terminals: Phosphor bronze with tin plating

Cable o.d. accommodation:

5.0 mm to 8.5 mm

Operating Life: ≥ 20 cycles

ELECTRICAL

Contact resistance: ≤ 20 m Ω

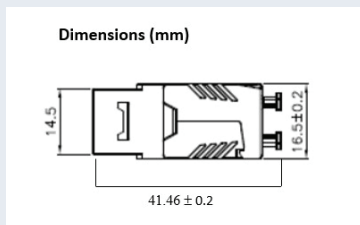
Insulation resistance:
 ≥ 500 M Ω at 100Vdc, for 60 sec.

Voltage: Contact to contact 1000 Vdc

Voltage rating: 150 V

PHYSICAL

Dimensions:



Shipping Weight: 0.9kg

COMMERCIAL STANDARDS

ANSI/TIA-568.2-D:2018

ISO/IEC 11801-1:2017

IEC 60603-7-51

IEC 606003-7-1

EN 50173-1

UL 1863

C22.2

RoHS and REACH compliant

PoE

Our PowerCat 6A system is suitable for the most demanding PoE applications:

IEEE 802.3bt from Type 1 to Type 4, and CISCO UPoE+

HD Base-T PoH up to 100W

RP3 compliant as defined by EN 50174-2:2018, ISO/IEC 14763-2:2019 and AS/NZS 14763.2:2020

Notes:

For new installations of PoE Type 3 / Class 5 and above that wish to be eligible for the Molex 25 year Application Assurance Warranty, we require Category 6A cable to be used throughout.

To confirm your PoE / RP3 cabling design is eligible for the Molex 25 year Application Assurance Warranty, your design must be verified and validated with the Molex PoE Calculator. Read more <https://www.molex.com/poe-calculator>

Molex recommends that the PoE feature on an individual switch port are power disabled prior to unplugging the associated powered Device.

Molex recommends that the full range of PowerCat 6A products be used in a system to maximize cabling and PoE performance. Details on Molex requirements for Warranty can be found at <https://www.molex.com/about-us/our-warranty/>

ORDERING INFORMATION

Order No.	SAP No.	Description
KSJ-00079	183010070	PowerCat 6A Tool-less shielded Keystone Jack

www.molex.com/products/copper/cat6a

PowerCat 6A Tool-less Shielded Keystone Jack >

COMPATIBLE PRODUCTS

Order No.	SAP No.	Description
Work Area Outlets		
MMS-00020-02	181770330	MOD-SNAP Keystone Jack Fascia, 38.5 x 25mm, unloaded - white
42-311-02	181400006	Single Gang MOD-SNAP 1 Aperture - 86 x 86mm
42-312-02	181400005	Single Gang MOD-SNAP 2 Aperture - 86 x 86mm
42-314-02	181400008	Double Gang MOD-SNAP 4 Aperture - 86 x 146mm
MMS-00014-**	Consult Molex	MOD-SNAP Module Blank
MEU-00071-02	181770333	Euromod Keystone Jack Fascia Wall Plate, Single Gang 86x 86mm - white
MEU-00072-02	181770334	Euromod Keystone Jack Fascia Wall Plate, Double Gang 86 x 1456mm - white
MEU-00073-02	181770332	Euromod Keystone Jack Fascia, 25 x 50mm, unloaded -white
MLG-00037-02	181770331	Keystone Jack Fascia, 22.5 x 45mm, unloaded - white
WNC-00052-02	181770335	DIN 49075 Keystone Jack Fascia 2 Port with Bezel, unloaded - white
Patch Panels		
PID-00257	182960014	24 Port Keystone Patch Panel, Unloaded, 19" 1U - with Cable Management Bar - Metric fixing kit, Black
	182960026	24 Port Keystone Patch Panel, Unloaded, 19" 1U - with Cable Management Bar - Imperial Fixing Kit, Black
PID-00289	182960027	48 Port Keystone Patch Panel Unloaded 19" 2U - with Cable Management Bar - Metric Fixing Kit, Black
	182960028	48 Port Keystone Patch Panel Unloaded 19" 2U - with Cable Management Bar - Imperial Fixing Kit, Black



From left: MMS-00020-02, MEU-00072-02, MEU-00073-02, MLG-00037-02, WNC-00052-02

www.molex.com/products/copper/cat6a