

## INSTANT SERVICE FOR E-COMMERCE ERA



### THE CHALLENGE

**Jing Dong E-mart is China's biggest B2C E-commerce portal website and the data center is the most important stage for its operation.**

It will process billions of product sample pictures, purchase orders and shipment records etc. and handle 500 million visits plus 7 million orders every day, such a large amount of data stream will require significant computing capability and reliability for data center infrastructure.

### THE SOLUTION

#### **OM3 pre-terminated fiber backbone**

In the latest phase of the Jing Dong data center project, distributed storage and computing solution is deployed with modular design. There are over 500 racks in total and they are divided into 26 modular sections, every rack in each modular section has 2 OM3 (link

A/B) connected to MDA-A/MDA-B. Inside rack TOR structure is applied directly connected to switch with 2-layer design (access switch and core switch). In the large modular section, 72 core pre-terminated fiber backbone is applied to connect with MDA while in the small modular section, 24 core pre-terminated fiber backbone is applied to connect with MDA.

MTP connectors are applied on both sides of the pre-terminated OM3 fiber, and in the fiber enclosures of each modular section's IDA consolidation rack, MTP-LC distribution modules are used to switch MTP connectors into LC connectors and then use LC-LC patch cords to connect access switches and core switches with distribution modules, high density fiber enclosures and MTP-LC distribution modules are also used in MDA.

### CUSTOMER PROFILE

#### **COMPANY**

Jing Dong E-mart

#### **INDUSTRY**

Retail

#### **PRODUCT NAME**

ModLink MTP OM3 fiber assemblies and ModLink cassettes

#### **SOLUTION FEATURES**

The Molex ModLink system is a cost-effective, quick and easy Plug and Play system, available in fiber. Suitable for mission critical applications, such as Data Centers and Storage Area Networks, the system provides premium factory-controlled optical performance, enabling flexible system configuration and fast, economical installation.

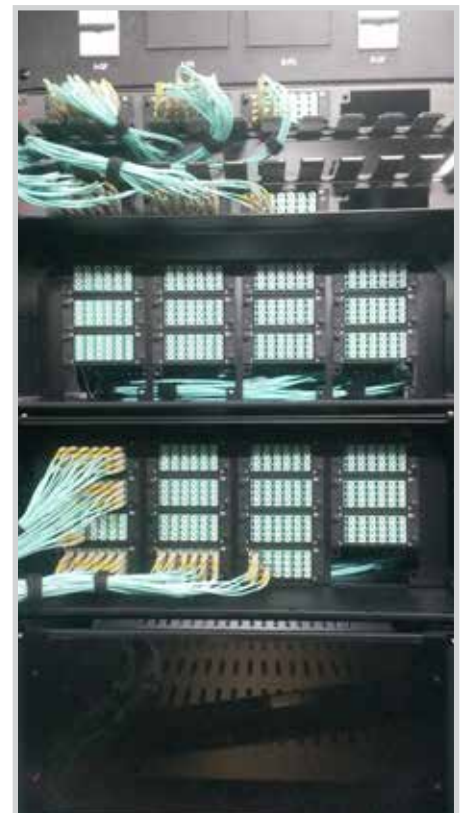
### THE BENEFITS

#### Use of pre-terminated solutions provide quick deployment capabilities

A pre-terminated cabling solution provides quick deployment capabilities to meet the customer's instant requirement and can be installed in different modules gradually. Customers only need to complete the cable laying, patch panels' installation, modular and patch cords connection on site which can save a lot time on fiber fusion. All the terminations are finished in factory with 100% test to guarantee good product quality. After field testing, the typical attenuation between 2 branch boxes with 70 meters MTP-MTP pre-terminated cable is only 0.6-0.7dB.

In order to meet Jing Dong's urgent requirement, Molex Premise Networks provided special quick delivery service. It only took 5 days from the customer's order to finish installation for the first 2 modular (No.1 and No.2 modules) cabling systems; and the rest of the products were installed within 2 weeks to ensure quick system deployment for the customer.

The Molex Connected Enterprise Solutions fiber pre-terminated cabling system uses a high density design, it can support up to 120 cores LC fiber laying in 1U density and 576 cores LC fiber connectors in 4U density. We can provide different solutions for different customers. All patch panels have a modular design which can support mixed applications with different types of fiber connectors, it can also support the application for RJ45 copper modules which achieves both copper and fiber mixed applications.



For more information on how Molex Connected Enterprise Solutions can improve the efficiency and physical security of your IT system, please visit us at [www.molexces.com](http://www.molexces.com)