

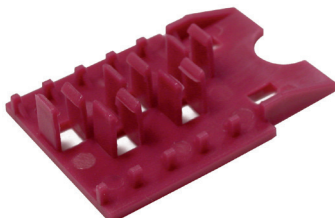
# Universal Splice Tray >

The Universal Splice Tray is a configurable enclosure for both mechanical and fusion splices. The tray is supplied with two fusion splice sleeves and two mechanical splice sleeves.

Loose tube cable is routed into and out of the tray through adjustable tube grips located at each corner. The tube grips eliminate the need for separate cable ties and are easily tightened and loosened in order to prevent over-compression of the loose tube cable.



AFR-00001



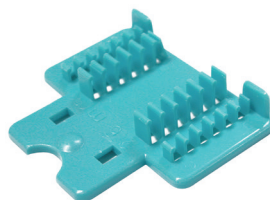
AFR-00334



AFR-00335



AFR-00336



AFR-00337



AFR-00338

## FEATURES AND ADVANTAGES >

Two splice tray versions available: 12 Fiber Splice Tray and 24 Fiber Splice Tray

Allows for easy tightening and loosening which prevents over-compression of the fiber cable

Fiber is routed through unique adjustable tube grips at each corner, eliminating the need for separate cable ties

## SPECIFICATIONS

### Mechanical

<b>Material:</b>	Molded ABS
<b>Shipping weight:</b>	3.5 oz. (99g)
<b>Dimension:</b>	95mm W x 143mm H x 13mm D (3.75" x 5.625" x 0.5")

## ORDERING INFORMATION

Part No	SAP No	Description
AFR-00001	Consult Molex	Universal Splice Tray - 12 Fibers
AFR-00334	Consult Molex	5 Fiber Mechanical Splice Holder
AFR-00335	Consult Molex	6 Fiber Fusion Splice Holder
AFR-00336	Consult Molex	Universal Splice Tray - 24 Fibers
AFR-00337	Consult Molex	12 Fiber Fusion Splice Holder
AFR-00338	Consult Molex	Universal Splice Tray - Unloaded

[www.molex.com/products/fiber/splicing/](http://www.molex.com/products/fiber/splicing/)

Molex is a registered trademark of Molex, LLC in the United States of America and may be registered in other countries; all other trademarks listed herein belong to their respective owners. This information is correct at the time of publication, specifications are subject to change.