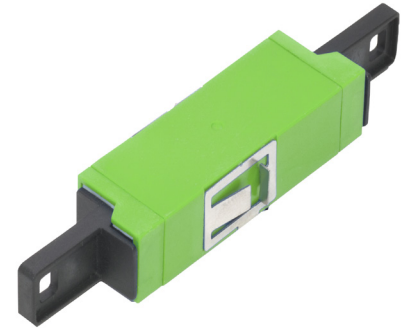


Fiber Optical E2000™ Snap Adapter APC SM >

Designed for high precision fiber networks, the E2000 has a spring-loaded shutter that protects the ferrule from dust and scratches. The shutter closes automatically when the connector is disengaged, keeping out contaminations, while locking in potentially harmful laser beams.

The Molex E2000 adapter family offers excellent performance attenuation value. With standard SC simplex footprint, it can suit all existing fiber platforms to provide a flexible application.



FEATURES & ADVANTAGES

The APC (Angles Physical Contact) connector minimizes back reflection due to a 5° to 15° angle-polish applied to end faces. Due to this angle, the reflected light does not stay in the fiber core but is designed to leak out into the cladding.

The connector has a spring-loaded self-closing shutter (dust cap) that protects the ferrule from external contamination and scratches.

Good compatibility, suitable for all fiber platforms.

High reliability & stability, offering “plug in and pull out” activity up to 1,000 times.

Accurate mechanical dimensions, allowing for a tight fitment of the adapter with the plate.

ROHS compliant, providing restrictions on the use of hazardous substances.

SPECIFICATIONS

Commercial Standards

ISO/IEC 1108:2008, ANSI/TIA-568.3-D

Mechanical

Material:
Adapter Housing: Polybutylene
 Terephthalate (PBT)
Dust Cap: Black Polybutylene
 Terephthalate (PBT)
Spring: Stainless Steel
Sleeve: Zirconia Ceramic

Specifications

Insertion Loss: SM/APC ≤0.2dB
Repeatability Operating: <0.2dB (up to
 1000 repeated insertions)
Temperature: -40°C ~ +80°C
 -40°F ~ +176°F

ORDERING INFORMATION

Order No.	SAP No.	Description
18282-0244	182820244	Fiber Optical Adapter E2000/APC SM OS1/2 SNAP - Green

www.molex.com/products/fiber/adapters-plates-and-connectors/