

Rack Display 4.3” (capacitive touchscreen) >

The display module, illustrated in Fig. 1, is an additional element enhancing the functionality of the CIIM system. It enables parameters to be displayed concerning environmental conditions in a given cabinet. The display is operated through a touch sensitive panel.

The display module fulfils the following functions:

- An electronic label unambiguously identifying a given cabinet,
- A touch-screen keyboard making it possible to authenticate users using a PIN code,
- Message of the day - a message displayed for all logged-in users, containing important information e.g. technical or organisational,
- Operation of the central module outputs (e.g. opening the cabinet door),
- Displaying the present temperature and humidity values and the inputs and outputs status,
- Informing about presently active alarms in the cabinet,
- Enabling creation of charts with temperature and humidity changes.

After the system is launched, the start screen is displayed, illustrated in Fig. 2. It displays the name of the given cabinet and information about presently active alarms in the cabinet.

To change the displayed name, enter the desired value in the Device Label field in the CIIM module configuration, in the Basic Settings tab. The modification will be automatically applied to the display module.

Pressing the Login button will take you to the login screen, where it will be necessary to type in the PIN code.



Fig. 1

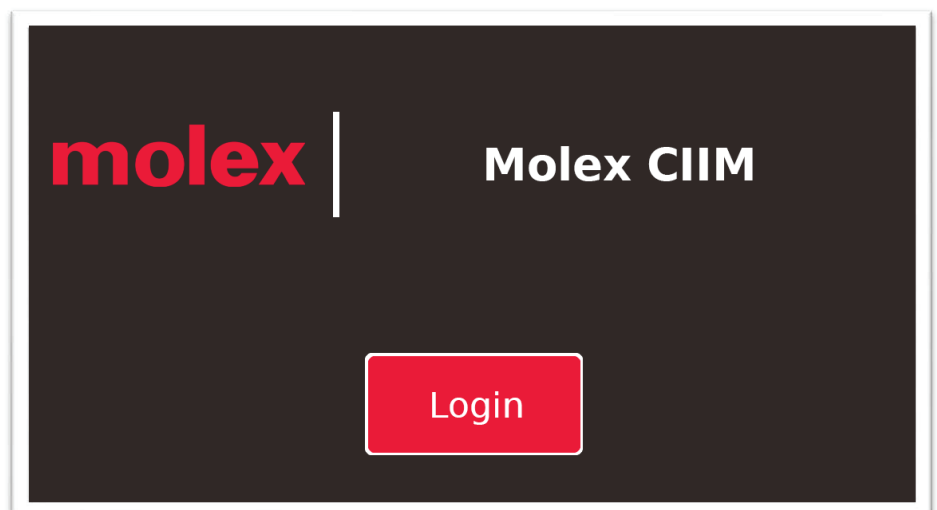


Fig. 2

Rack Display 4.3” (capacitive touchscreen) >

The login screen, shown in Fig. 3, consists of a numeric keyboard, a text field and the Clear, Back and Enter buttons.

Users may authorise their access to the system using the keyboard.

In order for the login to be possible, you should formulate a PIN code beforehand, by creating a new user account or editing an existing one in the CIIM switchboard.

To do that, save the intended access code in the Access Control tab, in the PIN CODE field for a given user. The PIN code must be 4 to 6 characters long.

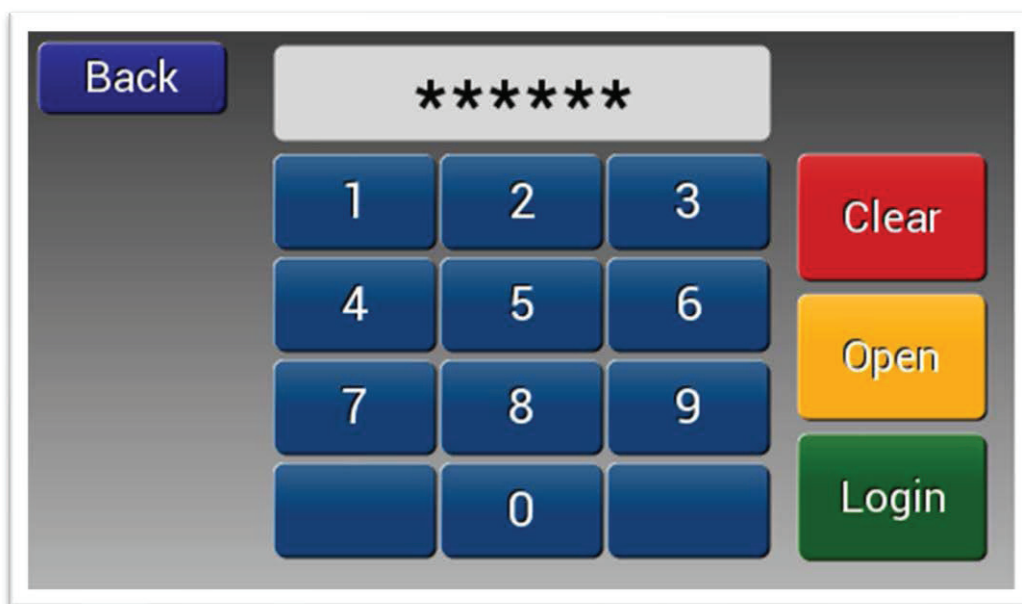


Fig. 3

After entering the PIN code and pressing the Enter button, you will enter the user authentication stage, presented in Fig. 4. Then, the display module communicates with the central module to check the given PIN code for authorisation.

The Back key will take you to the previous screen and the Clear key deletes the entered PIN code digits.

Rack Display 4.3” (capacitive touchscreen) >

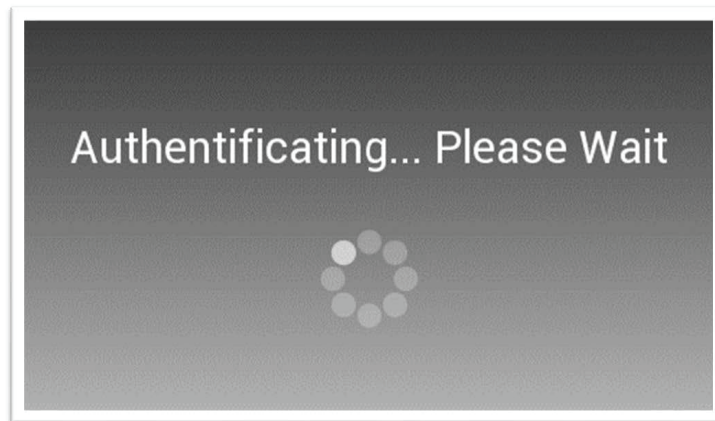


Fig. 4

The result of the authentication will be one of two possible screens: the successful login screen (Fig. 5) or the access refusal screen (Fig. 6).

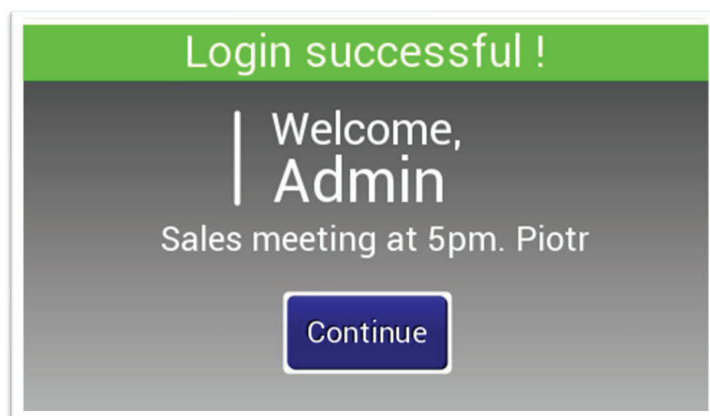


Fig. 5

The successful login screen contains information on the name of the user whose PIN has been used and a text field with an optional notification of the day.

The contents of the notification can be configured in the settings of the CIIM central module, in the Basic Settings tab, the Display message box field.

Rack Display 4.3" (capacitive touchscreen) >

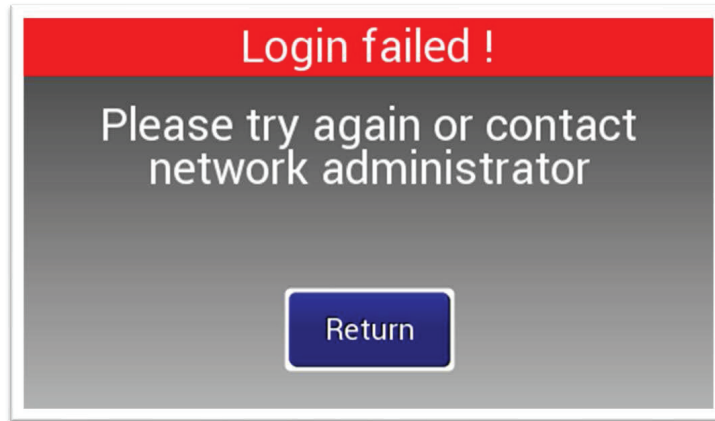


Fig. 6

If the access refusal screen appears, you should return to the login screen, using the Return key, and make a second attempt or contact the system administrator with the purpose of assigning adequate authorisation (PIN).

Choosing the Continue option in Fig. 5 will cause that the display will switch to the status screen, illustrated in Fig. 7.

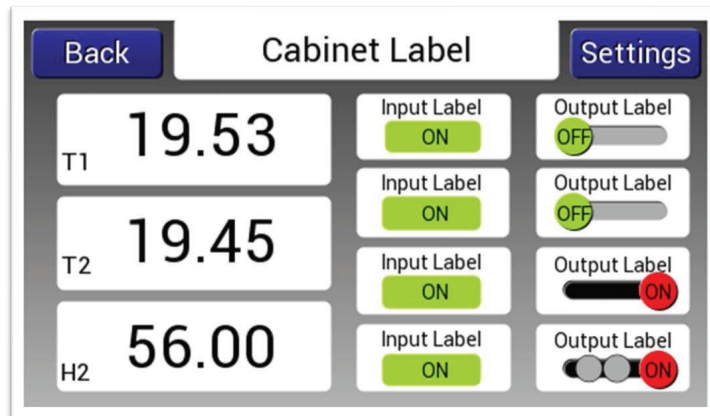


Fig. 7

The status screen comprises 3 sections:

- Readings of the temperature sensors measurements (T1) and combo (T2, H2). Pressing the field of a given measurement will result in switching to the chart drawing screen covering a period of 24 hours or 7 days, illustrated in Fig. 8.
- Indicators of EMI-One system inputs. Particular input states are marked with colours, and so the open status is signalled with red colour, and the closed one – with green. The input marks are displayed analogically to the input labels configured in the CIIM settings, the I/O Settings tab.
- The output status indicators, with a possibility of changing the status by pressing the slider. Analogically, the status indicators are marked with colours – green indicates output is switched off, and red – output is switched on.

Rack Display 4.3” (capacitive touchscreen) >

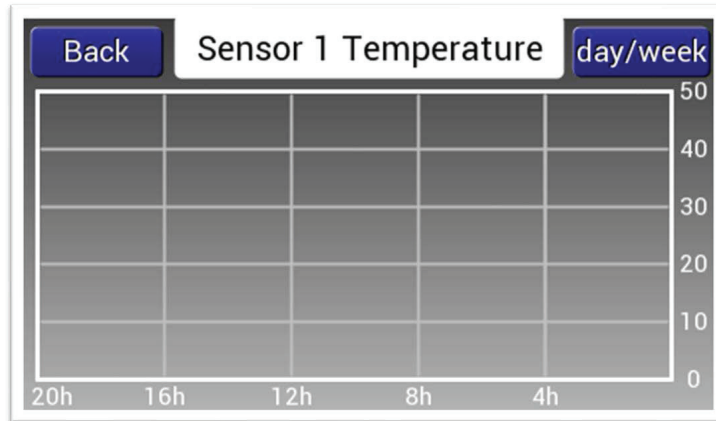


Fig. 8

On the status screen, the user can move, using the Settings button, to the display module configuration screen, illustrated in Fig. 9.

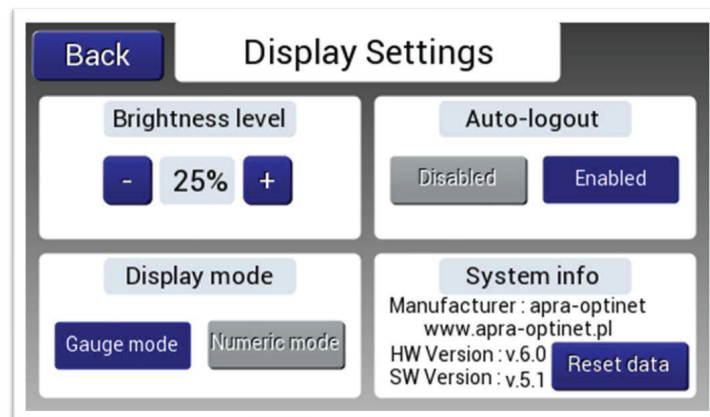
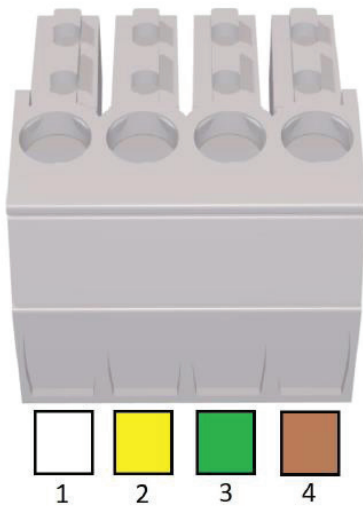


Fig. 9

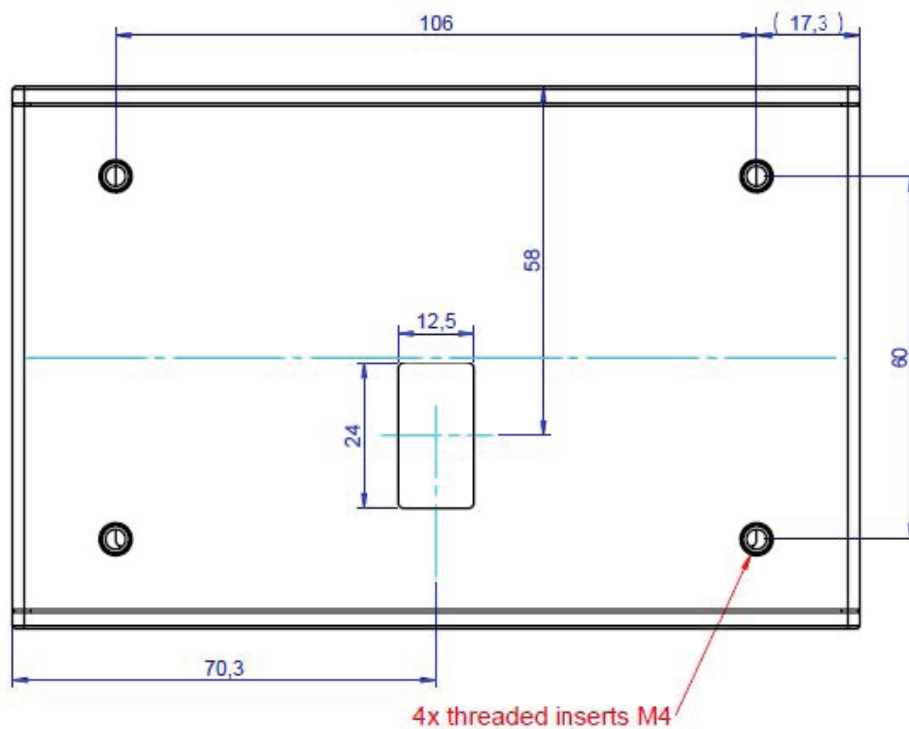
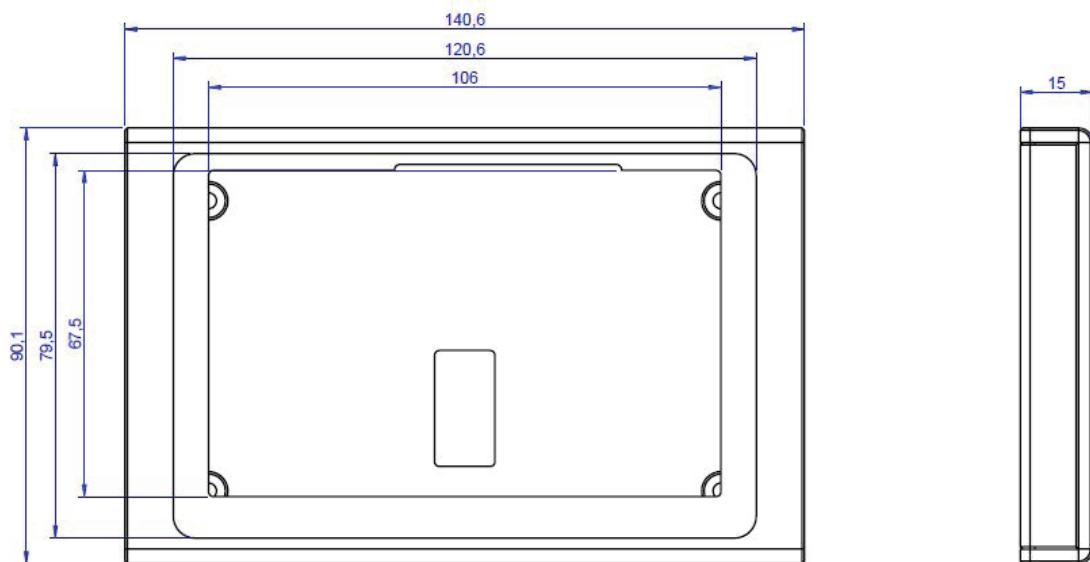
The Display settings section includes 4 levels of backlight brightness regulation, choosing the temperature and humidity readings display mode on the status screen and enabling or disabling the Auto-logout function. If Auto-logout is enabled, the user will be logged out after taking no action for 10 minutes. The screen contains also information about current equipment and software version of the display module.

Rack Display 4.3" (capacitive touchscreen) >

No.	Color	Signal	TBW 4-Pin Plug	JST 4-Pin Plug
1	White	VCC 12V	1	4
2	Yellow	B	2	3
3	Green	A	3	2
4	Brown	GND	4	1



Rack Display 4.3" (capacitive touchscreen) >



Rack Display 4.3" (capacitive touchscreen) >

SPECIFICATIONS

Diagonal of the screen: 4.3"

Resolution: 480x272px

Matrix type: LCD TFT

Inbuilt touch sensitive panel: Yes, of the capacitive type

Communication interface: RS485

Data refresh rate: 5 seconds

Temperature and humidity chart: Yes, daily or weekly range

Power supply: 12V DC (from the CIIM system)

Power consumption: 100 mA

Electrical connectors: JST 4-pin socket

Working temperature: -10°C to +60 °C

Enclosure: Plastic

Dimensions: 140x90x15 mm

Color of the enclosure: Black, others available to order

International protection rating: IP20

Weight: 170g net

Additional equipment: Connecting cable to the CIIM Controller module

Cable parameters: LIYY 4x0.25mm², black, l. 3 m

Cable end: TBW-4pin plug, JST-4pin plug

Certifications: CE

Warranty: For warranty information, please contact your local Molex Sales Representative.

ORDERING INFORMATION

Order No.	Description
181030167	Rack Display 4.3" (capacitive touchscreen)